

Project:
USPFO Warehouse
 Jackson, MS

Designer:

Millwork Contractor/Installer:

Date:
10/15/2020

General Contractor:

Rev/Date:

GENERAL SPECIFICATIONS

CONTRACT SCOPE & INDEX OF DRAWINGS

#	DESCRIPTION	# OF ROOMS	SHEET #
0	INDEX & SCOPE	N/A	MM0.1
1	GENERAL NOTES	N/A	MM0.2
2	KEY PLAN	N/A	MM0.3
3	FINISH & HARDWARE SCHEDULE	N/A	MM0.4
4	KITCHEN	1	MM1.0 - MM1.2
5	SECTIONS	N/A	MM2.0 - MM2.5

EXCEPTIONS NOTED

ARCHITECT NOTES:

GENERAL CONTRACTOR NOTES:

GENERAL SYMBOLS

SYMBOL	DESCRIPTION	SYMBOL	DESCRIPTION
	FINISH MARK		SECTION MARK
	ELEVATION MARK		GRAIN DIRECTION
	WALL BLOCKING (BY OTHERS)		REVISION MARK

EXCLUSIONS

Project:
 USPFO Warehouse
 Jackson, MS

USPFO Warehouse
 QCP #: 20.1897 Inspection Required
 McNeil Cabinet & Millwork
 a QCP Accredited Firm



Millwork Manufacturer/Installer:

Sheet:

Drawn By: **GK**
Index & Scope
 ALL DIMENSIONS TO BE VIF PRIOR TO FABRICATION | ALL MATERIAL CONNECTIONS TBD IN SHOP TO BEST ACCOMMODATE SPECIFIC PIECE

Index 1

GENERAL CABINET NOTES:

1. Grade: Premium
2. Type of Construction: Frameless
3. Doors and drawer fronts - Vertical Grade (VGS) - Formica #1547-PG Noir Cedar on both sides with MDF core. Adhesive used - Wilsonart #WA-3100 cold press.
4. Exterior cabinet body parts - Vertical Grade (VGS) - Formica #1547-PG Noir Cedar on the exterior side and Wilsonart #1573-60 Frosty White Vertical Grade (VGS) on the semi-exposed interior side with MDF core. Adhesive used - Wilsonart #WA-3100 cold press.
5. Interior semi-exposed cabinet parts - 3/4" thermoset decorative White Melamine LPDL/TPL on MDF core.
6. Drawer sides and backs - 3/4" thermoset decorative White Melamine LPDL/TPL on MDF core.
7. Drawer bottoms and cabinet backs to be 1/4" thick thermoset decorative White Melamine LPDP/TPL on MDF core.
8. Counter tops to have no laminate joints in top surface. Grade HGS for Horizontal Surface. Tops are Formica #6920-58 Mineral Spa. Wilsonart #951 contact adhesive
9. Cabinet wall attachment method - 3" long #10 pan head cabinet installation screws.
10. Adhesive used for wood dowel case construction is: Titebond Doweling LV and or Titebond Original Wood glue.
11. Adhesive used on cabinet backs and drawer bottoms: Leech brand F-26 Construction Adhesive
12. Cabinet shelf edge - 0.12 (3mm) PVC banding matching in color, pattern and finish.

The following item are for the Architect's review/approval:

13. Per Specification 064116, 2.1, F. Laminate Cladding for Exposed Surfaces: #4. Edges: are specified as Grade VGS or vertical grade laminate.

We would like to change this to either .5mm or 3mm PVC edge-banding that will match the exterior laminate in color and finish. The .5mm is typically used on cabinet body parts, and the doors and drawer fronts can be either .5mm (thin) square cut or 3mm (1/8"thick) with a round over profile. The 3mm is typically used in heavy use areas where durability is a concern. Adhesive used on all edge-banding is Techno Melt Dorus HKP 21

Please list banding preferences:_____

14. Per the specifications 064116, 2.1, F, #5 Pattern Direction (for laminate): is listed as "Parallel to cabinet fronts." That would put the wood grain on all drawer fronts running horizontally across the cabinets. Vertical Grain matched is typical.

Please list preference:_____

15. Per the specifications 064116, 2.3, B, Hinges are specified as 135 degrees of opening, self closing. We do not have this specific degree of hinge available. We can supply either a 110 degree self close hinge or a 155 degree self closing hinge. (See the attached updated hardware submittal)

Please list preference:_____

16. Per the specifications 064116, 2.3, D, Wire pulls are listed as 4" long and 5/16" in diameter. Our standard wire pull is 96mm (3.78") from center to center. Is this an acceptable alternative?

Please list preference:_____

17. Per the specification 064116, 2.3, F, Shelf Rests are listed as metal two pin type with shelf hold-down clips. This is an older style of adjustable shelf system with inset metal standards and (2) pin metal clips. What was originally proposed in our shop drawings is 5mm adjustable shelf system holes with a single pin shelf support. This is our standard for commercial applications. We also have shelf locking plastic duel pins available. We can provide any of the systems listed above.

Please list preference:_____

18. Drawer guides to be used are the KV #4500 Full Extension, Zinc Finish, 100lbs rated.
19. Cabinet shelves in cabinets wider than 33" to be 3/4" thick veneer core plywood with vertical grade (VGS) White laminate on (2) sides.
20. Counter tops to be constructed of 3/4" thick MDF with horizontal grade laminate surface and .7mm or greater high pressure phenolic backer for balanced construction. Tops with sinks will have a core of 3/4" thick Moisture Resistant MDF.

Architect Signature / Date

Date:

10/15/2020

Rev/Date:

Project: **USPFO Warehouse**
Jackson, MS

USPFO Warehouse
QCP #: 20.1897 *Inspection Required*
McNeil Cabinet & Millwork
a QCP Accredited Firm



Millwork Manufacturer/Installer:

Sheet:

Drawn By:

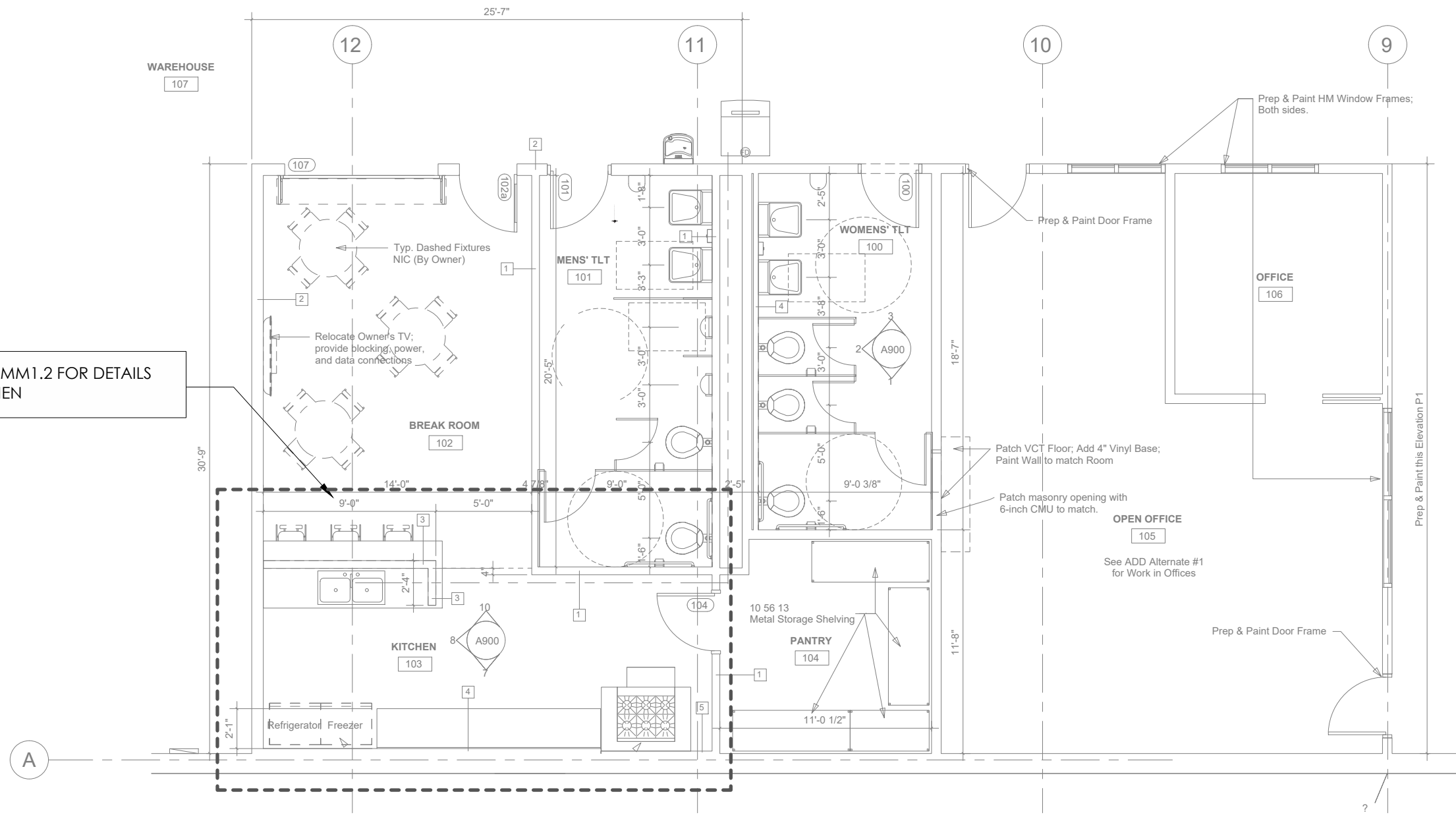
GK

Sheet Name: **GENERAL NOTES**

ALL DIMENSIONS TO BE VIF PRIOR TO FABRICATION | ALL MATERIAL CONNECTIONS TBD IN SHOP TO BEST ACCOMMODATE SPECIFIC PIECE

MM0.2

REF. TO DWG MM1.0 - MM1.2 FOR DETAILS
 KITCHEN



Project: **USPFO Warehouse**
 Jackson, MS

USPFO Warehouse
 QCP #: 20.1897 *Inspection Required*
McNeil Cabinet & Millwork
 a QCP Accredited Firm



Millwork Manufacturer/Installer:

Drawn By: **GK**

LOCATION PLAN

Sheet:

MM0.3

ALL DIMENSIONS TO BE VIF PRIOR TO FABRICATION | ALL MATERIAL CONNECTIONS TBD IN SHOP TO BEST ACCOMMODATE SPECIFIC PIECE

Date: **10/15/2020**

Rev/Date:

FINISH SCHEDULE						
TYPE	MATERIAL	MANUFACTURER	MODEL #	COLOR/FINISH	LOCATION	SPECIFICATIONS/NOTES
PL-1	PLASTIC LAMINATE	FORMICA	1547-PG	NOIR CEDAR	CABINETS	-
PL-2	PLASTIC LAMINATE	FORMICA	6920-58	MINERAL SPA	COUNTERTOPS	-

HARDWARE SCHEDULE						
TYPE	MATERIAL	MANUFACTURER	MODEL #/SIZE	COLOR/FINISH	LOCATION	SPECIFICATIONS
DRAWER SLIDES	METAL	KNAPE & VOGT	KV4500	STANDARD	WHERE APPLICABLE	-
HINGES	METAL	BLUM INSERTA	71B75X0 / 155°	STANDARD	WHERE APPLICABLE	-
PULLS	METAL	JEFFERY ALEXANDER	96 mm WIRE	BRUSHED CHROME	WHERE APPLICABLE	-
SHELF PINS	METAL	TBD	5mm	SILV W/ CLEAR PAST. REST	WHERE APPLICABLE	
C/T SUPPORT BRACKET	METAL	A & M HARDWARE	5" x 8"	ALMOND	WHERE APPLICABLE	
LOCK	METAL	TBD	TBD	TBD	WHERE APPLICABLE	

Project: **USPFO Warehouse**
Jackson, MS

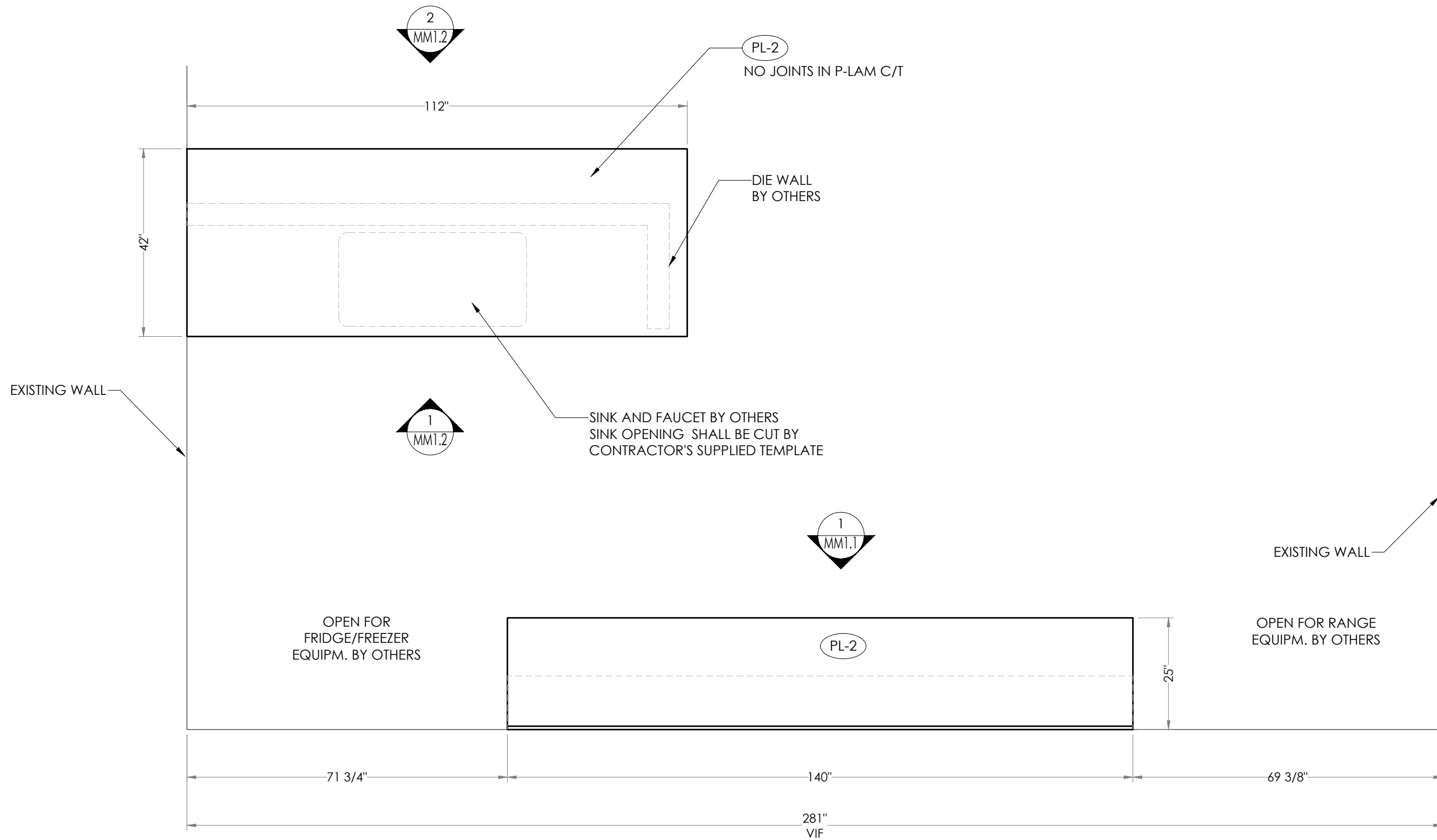
USPFO Warehouse
QCP #: 20.1897 *Inspection Required*
McNeil Cabinet & Millwork
a QCP Accredited Firm



Millwork Manufacturer/Installer:
Sheet Name:
Sheet:

Drawn By: **GK**
FINISH & HARDWARE SCHEDULE
ALL DIMENSIONS TO BE VIF PRIOR TO FABRICATION | ALL MATERIAL CONNECTIONS TBD IN SHOP TO BEST ACCOMMODATE SPECIFIC PIECE

MM0.4



1 KITCHEN - 1 ROOM (103)
 MM1.0 PLAN SCALE: 1/2"=1'-0" @ 11"x17"

Date: 10/15/2020
 Rev/Date:

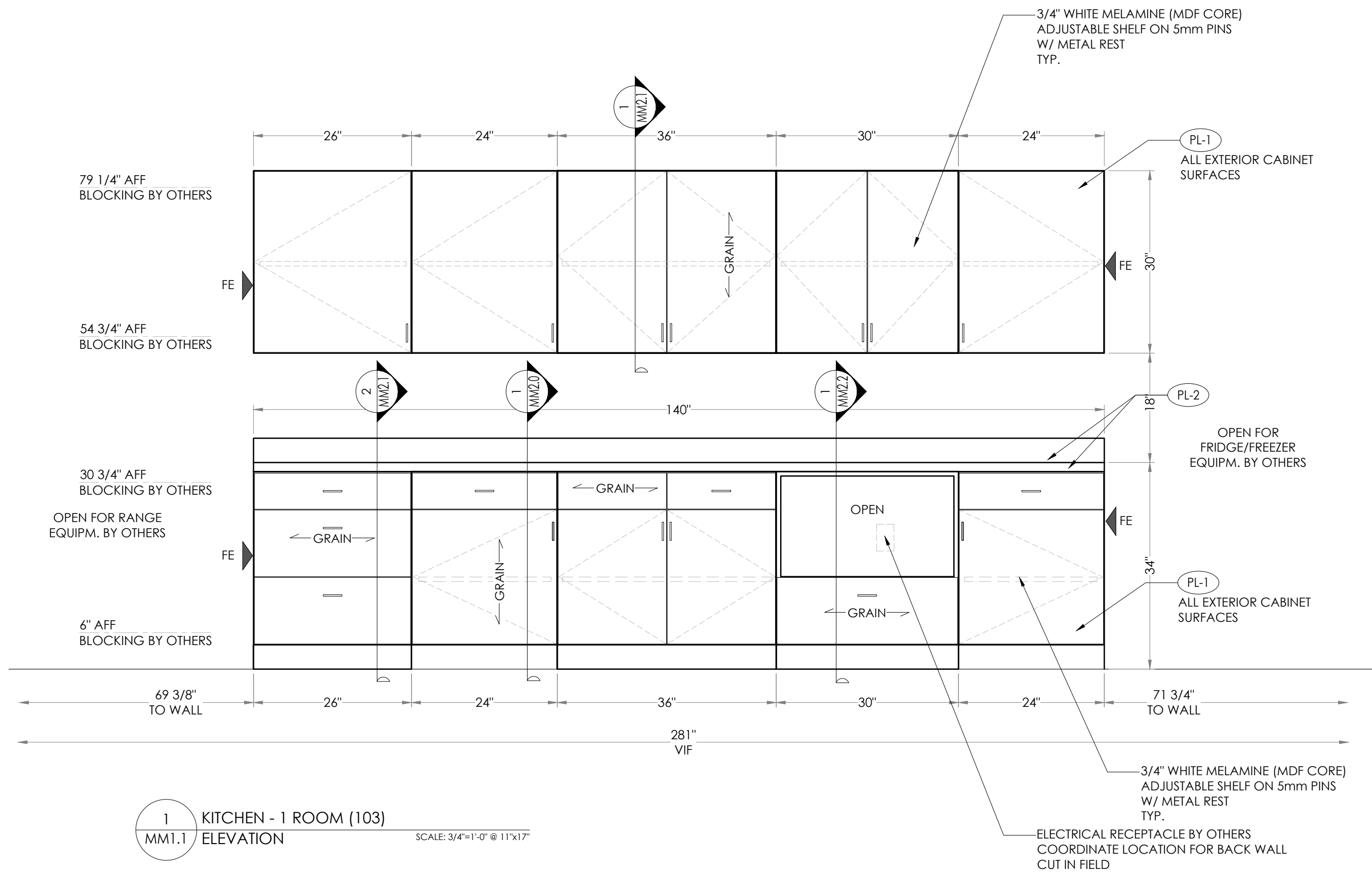
Project: USPFO Warehouse
 Jackson, MS

USPFO Warehouse
 QCP #: 20.1897 Inspection Required
 McNeil Cabinet & Millwork
 a QCP Accredited Firm

Millwork Manufacturer/Installer:
 Sheet Name: KITCHEN - 1 ROOM (103)
 Drawn By: GK

Sheet: MM1.0

ALL DIMENSIONS TO BE VIF PRIOR TO FABRICATION | ALL MATERIAL CONNECTIONS TBD IN SHOP TO BEST ACCOMMODATE SPECIFIC PIECE



1 KITCHEN - 1 ROOM (103)
 MM1.1 ELEVATION

SCALE: 3/4"=1'-0" @ 11"x17"

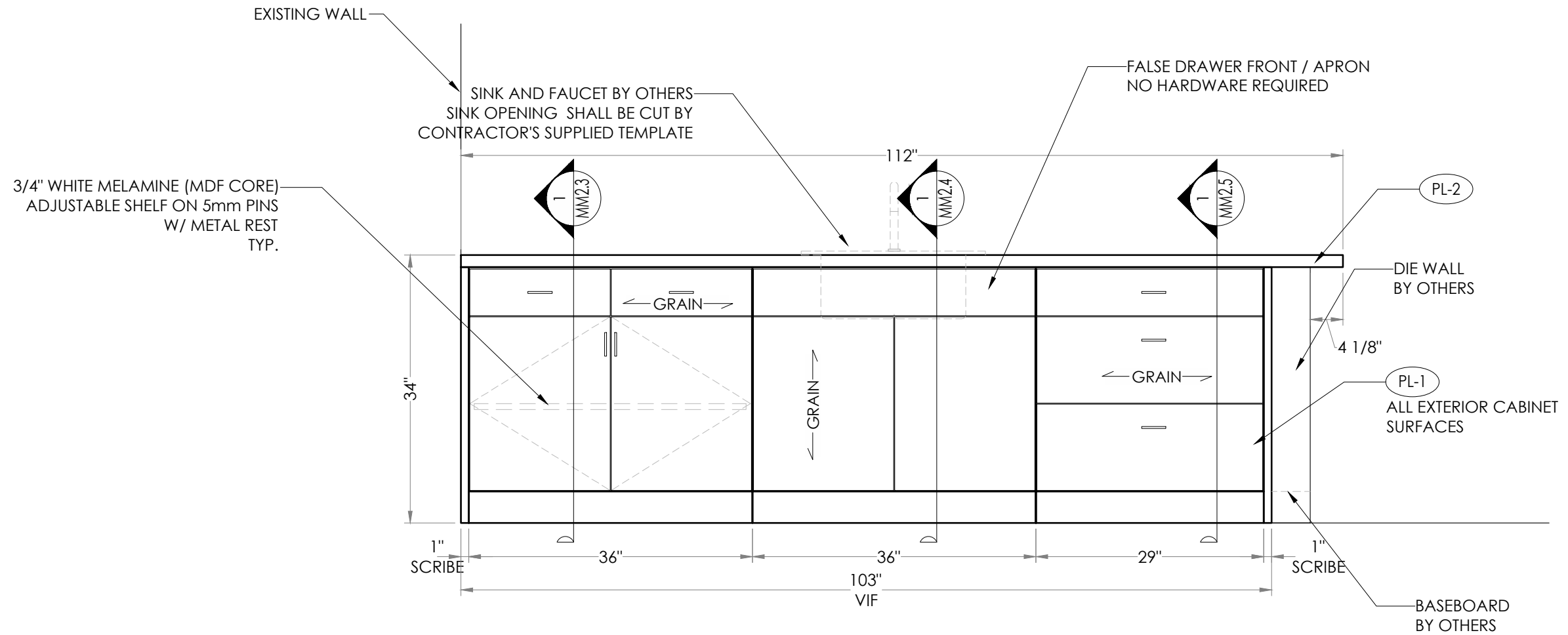
Project: **USPFO Warehouse**
 Jackson, MS

USPFO Warehouse
 QCP #: 20.1897 Inspection Required
 McNeil Cabinet & Millwork
 a QCP Accredited Firm

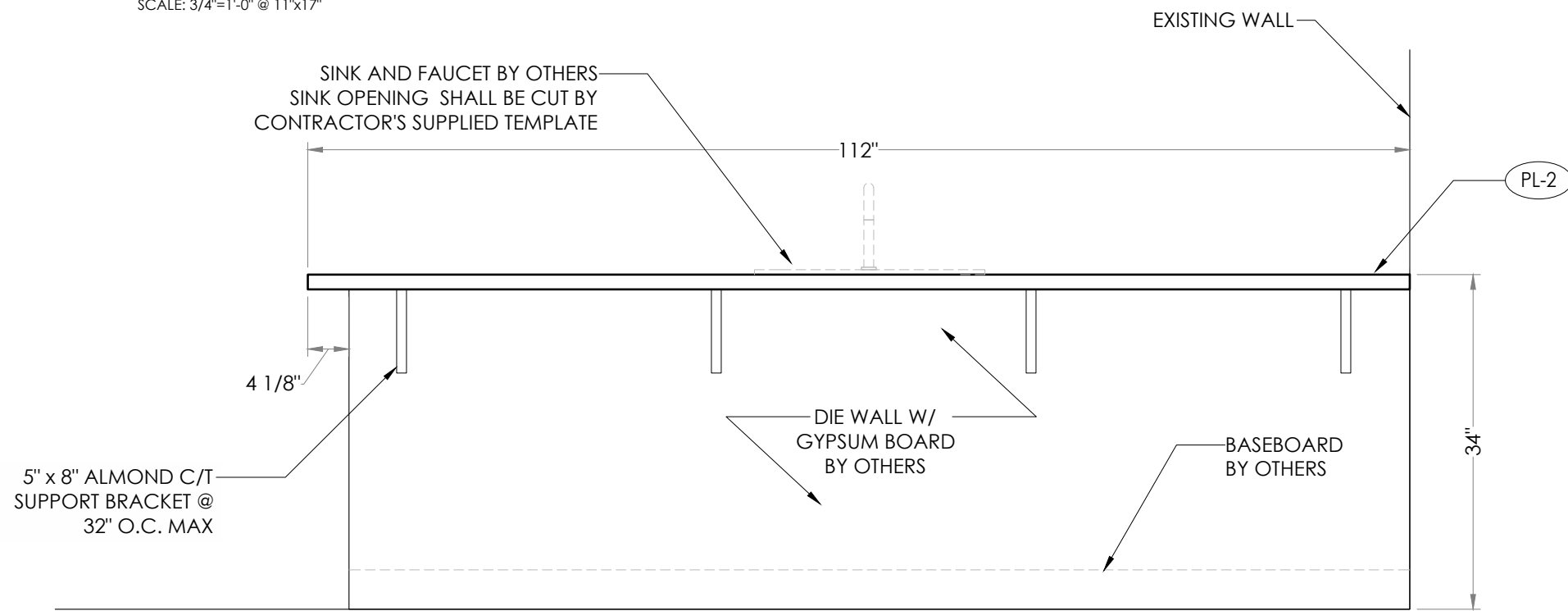


Millwork Manufacturer/Installer:

Drawn By: **GK**
 Sheet Name: **KITCHEN - 1 ROOM (103)**
 ALL DIMENSIONS TO BE VIF PRIOR TO FABRICATION | ALL MATERIAL CONNECTIONS TBD IN SHOP TO BEST ACCOMMODATE SPECIFIC PIECE



1 KITCHEN - 1 ROOM (103)
 MM1.2 ELEVATION SCALE: 3/4"=1'-0" @ 11"x17"



2 KITCHEN - 1 ROOM (103)
 MM1.2 ELEVATION SCALE: 3/4"=1'-0" @ 11"x17"

Date: **10/15/2020**
 Rev/Date:

Project: **USPFO Warehouse**
 Jackson, MS

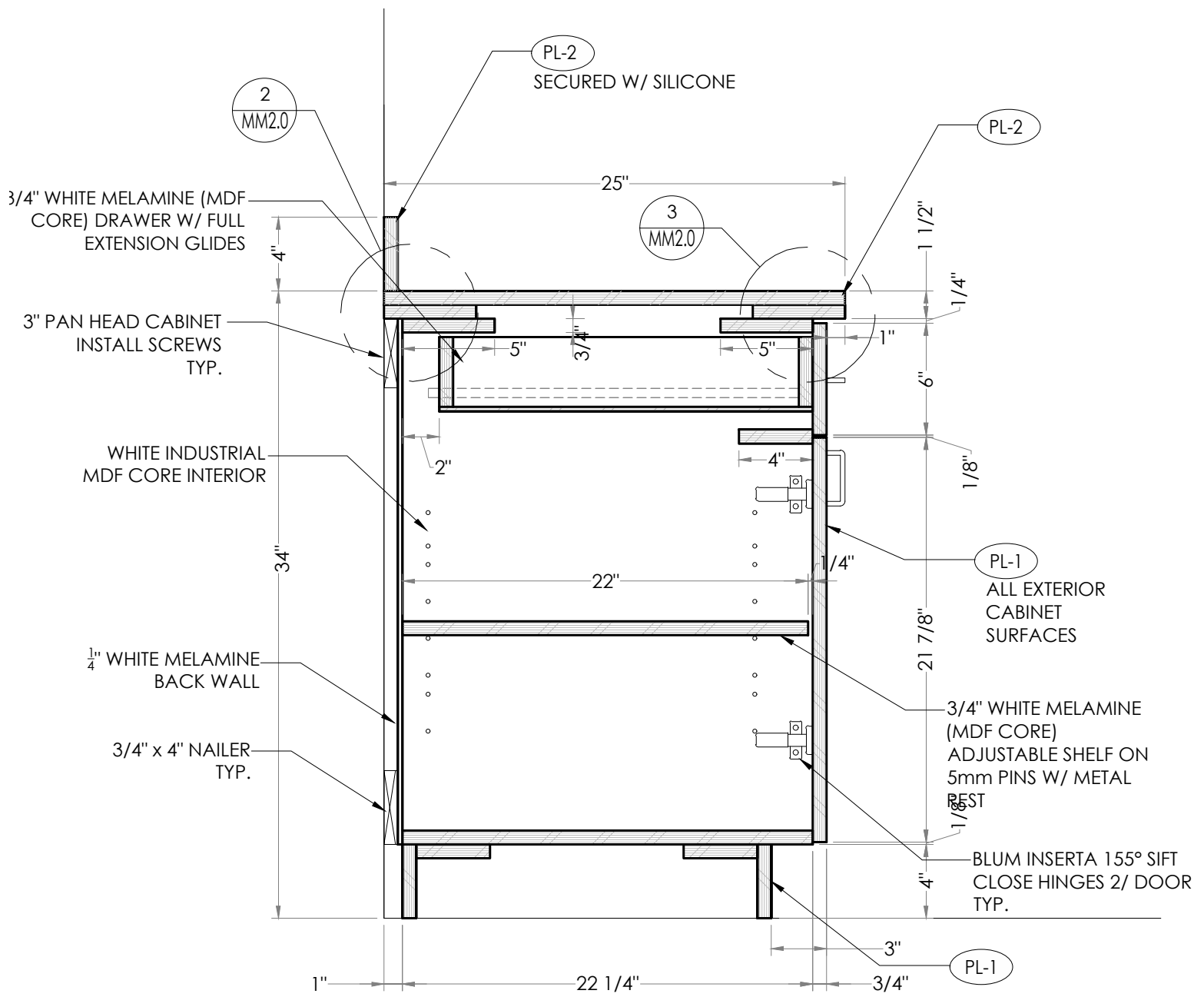
USPFO Warehouse
 QCP #: 20.1897 Inspection Required
 McNeil Cabinet & Millwork
 a QCP Accredited Firm



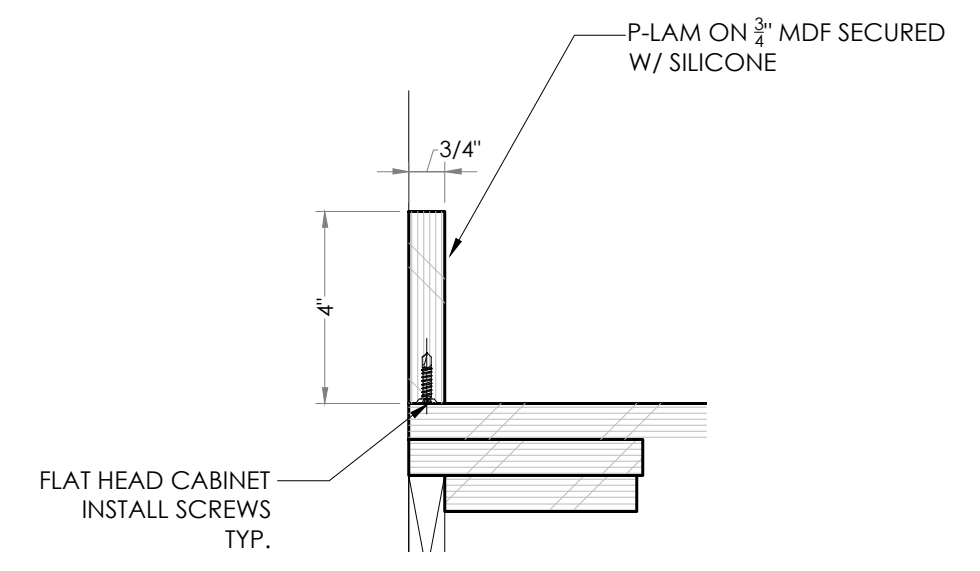
Millwork Manufacturer/Installer:

Sheet Name: **KITCHEN - 1 ROOM (103)**
 Sheet: **MM1.2**

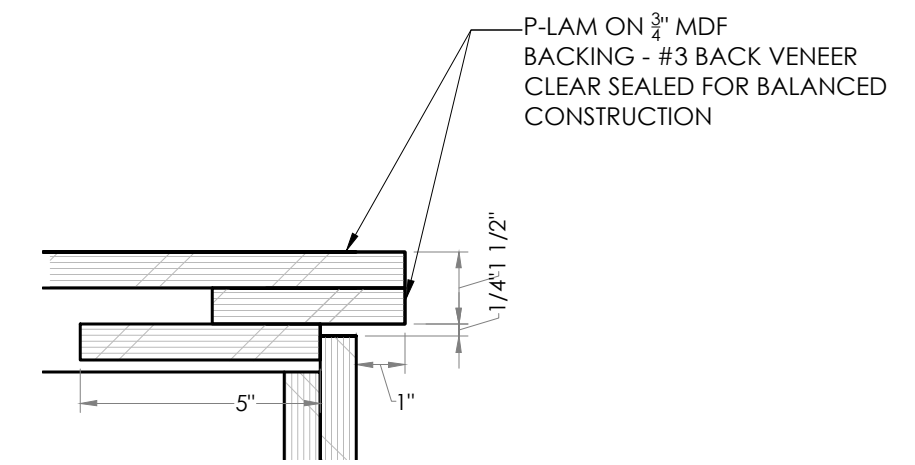
Drawn By: **GK**
 ALL DIMENSIONS TO BE VIF PRIOR TO FABRICATION | ALL MATERIAL CONNECTIONS TBD IN SHOP TO BEST ACCOMMODATE SPECIFIC PIECE



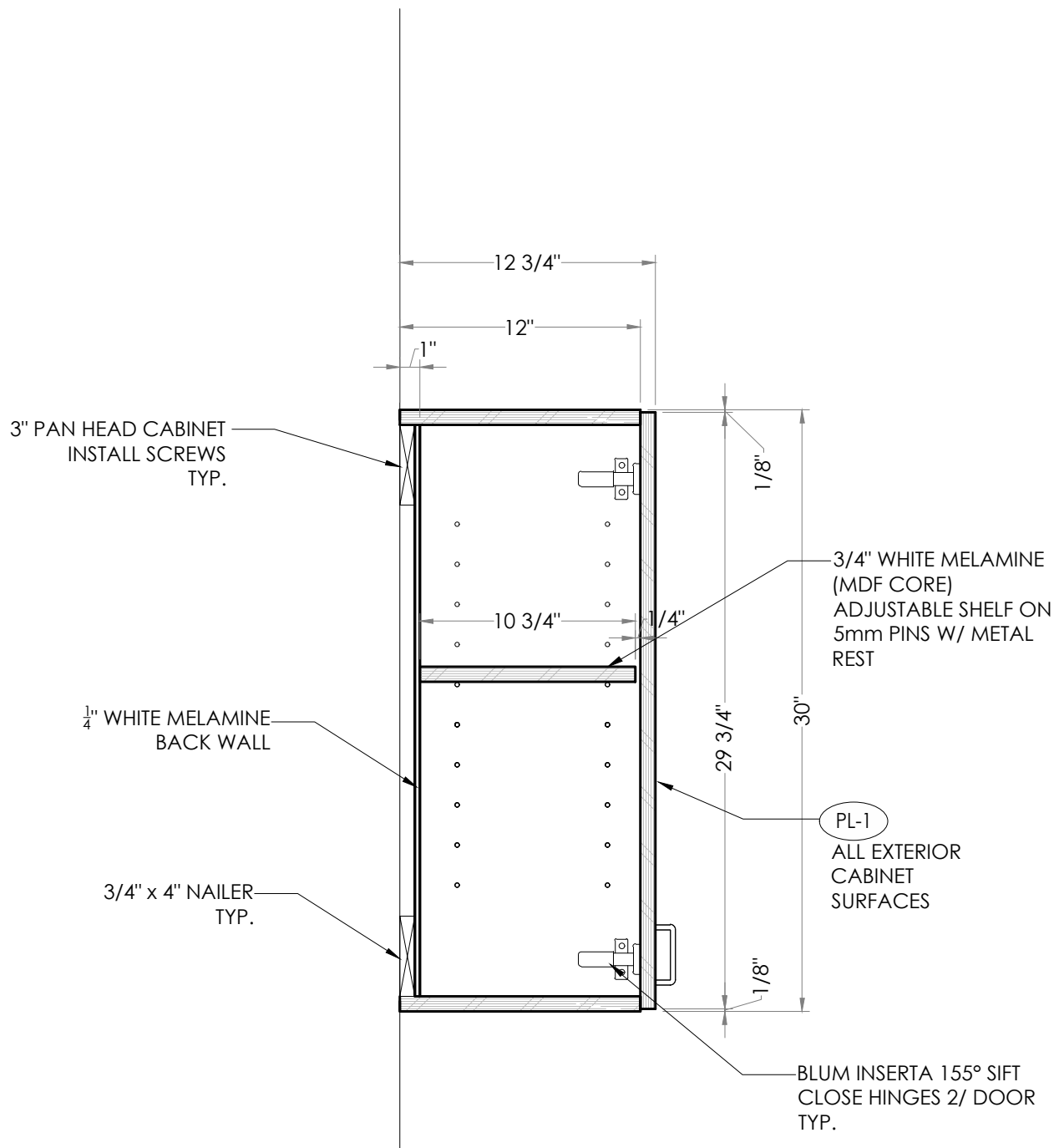
1 SECTION
 MM2.0 SCALE: 1 1/2"=1'-0" @ 11"x17"



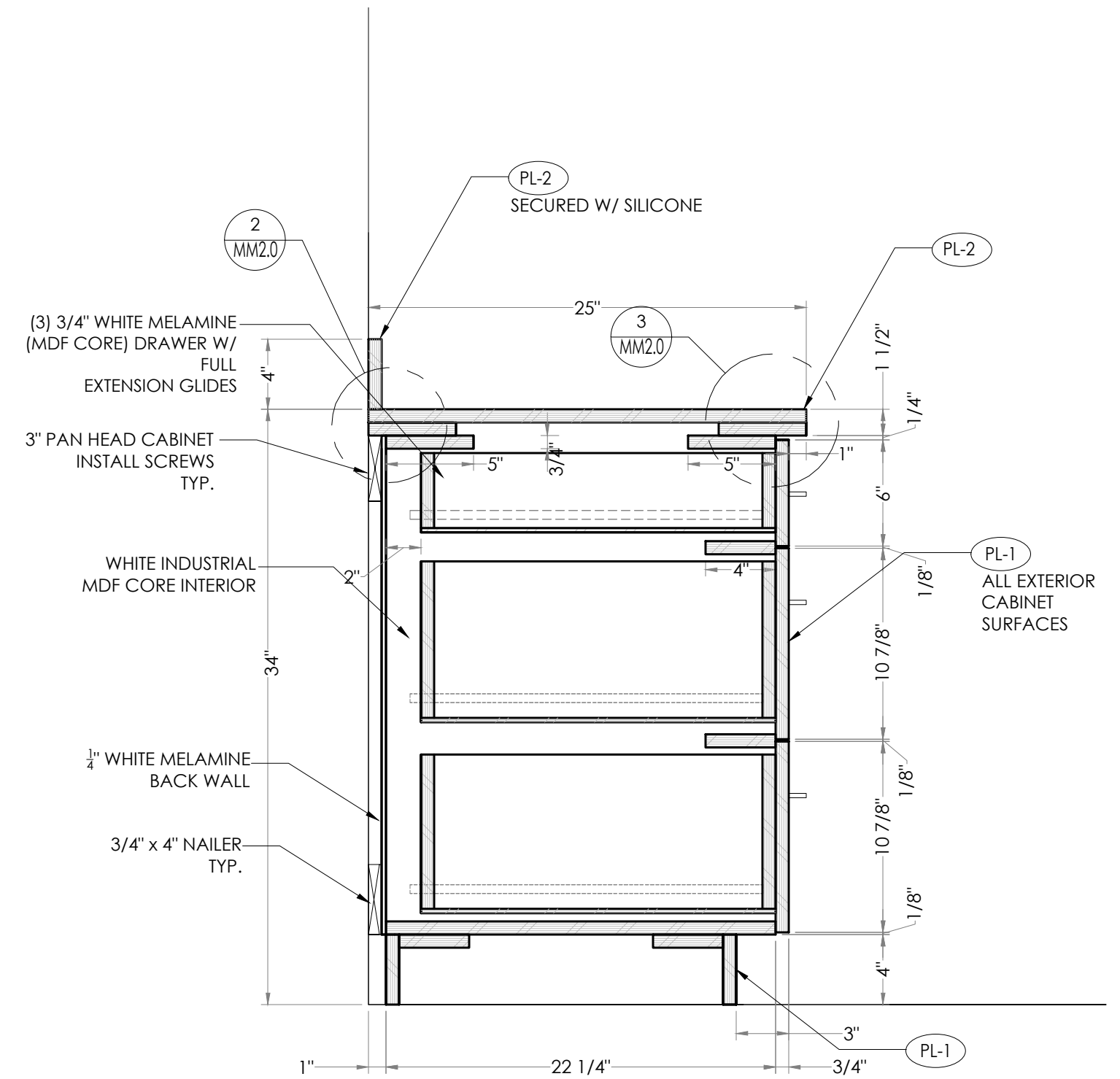
**2 P-LAM COUNTERTOP
 B/S & RETURN SECTION** SCALE: 3"=1'-0" @ 11"x17"



**3 P-LAM COUNTERTOP
 FRONT OVERHANG SECTION** SCALE: 3"=1'-0" @ 11"x17"



1 SECTION
 MM2.1
 SCALE: 1 1/2"=1'-0" @ 11"x17"



2 SECTION
 MM2.1
 SCALE: 1 1/2"=1'-0" @ 11"x17"

Project: **USPFO Warehouse**
 Jackson, MS

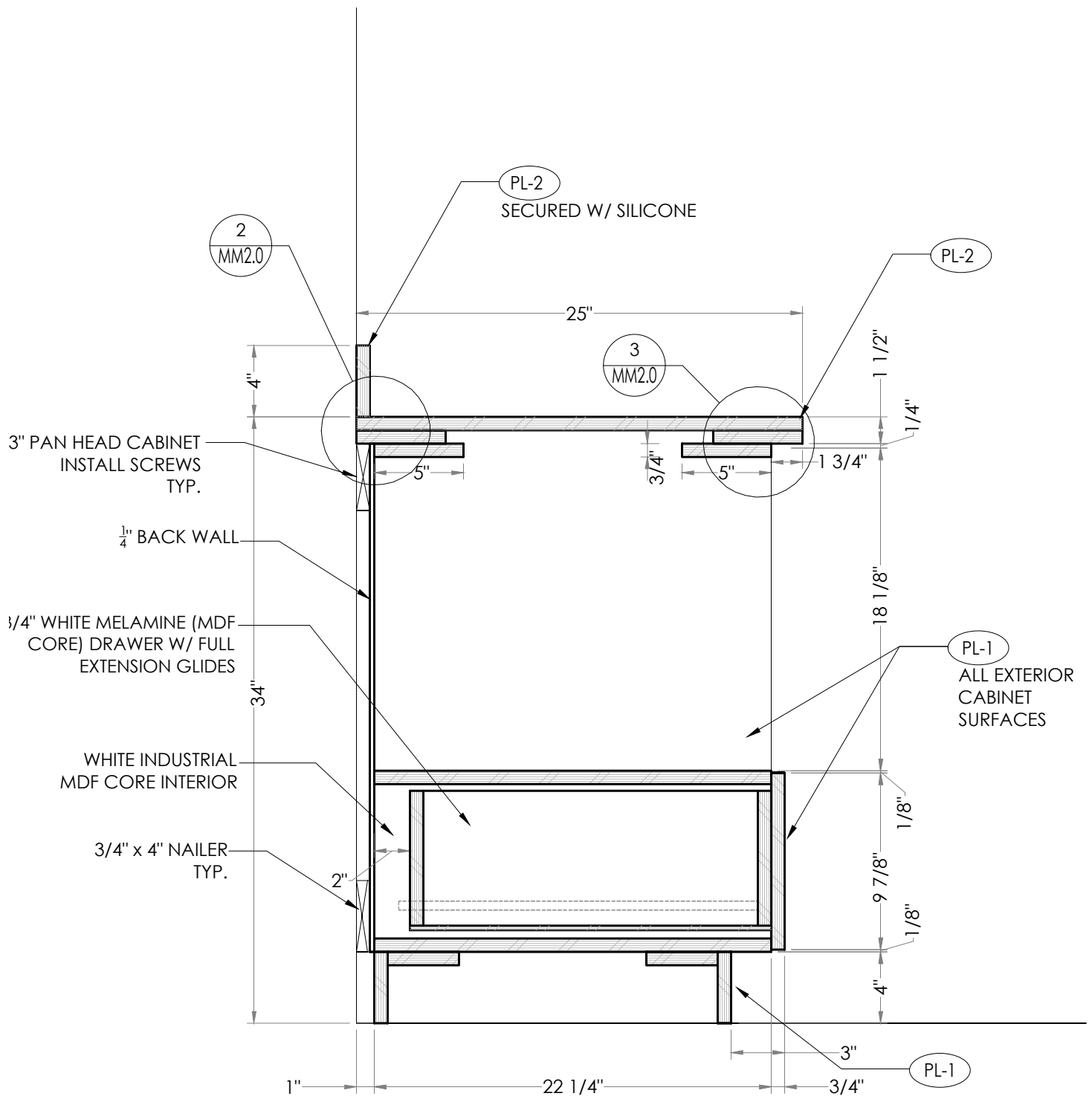
USPFO Warehouse
 QCP #: 20.1897 *Inspection Required*
McNeil Cabinet & Millwork
 a QCP Accredited Firm



Millwork Manufacturer/Installer:
 Sheet:

Drawn By: **GK**
SECTIONS
 ALL DIMENSIONS TO BE VIF PRIOR TO FABRICATION | ALL MATERIAL CONNECTIONS TBD IN SHOP TO BEST ACCOMMODATE SPECIFIC PIECE

MM2.2



1 SECTION
MM2.2 SCALE: 1 1/2"=1'-0" @ 11"x17"

Project:
USPFO Warehouse
 Jackson, MS

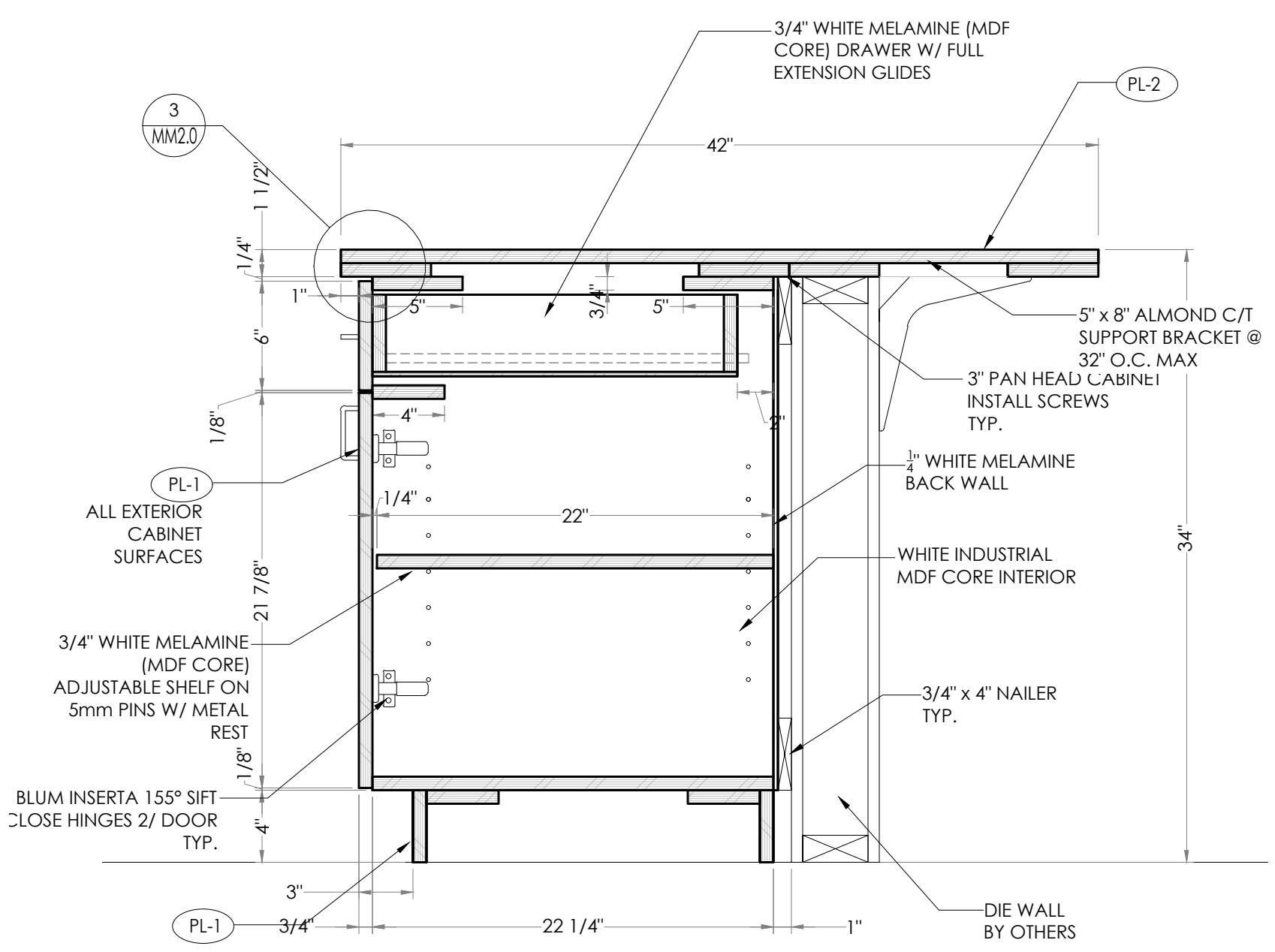
USPFO Warehouse
 QCP #: 20.1897 *Inspection Required*
McNeil Cabinet & Millwork
 a QCP Accredited Firm



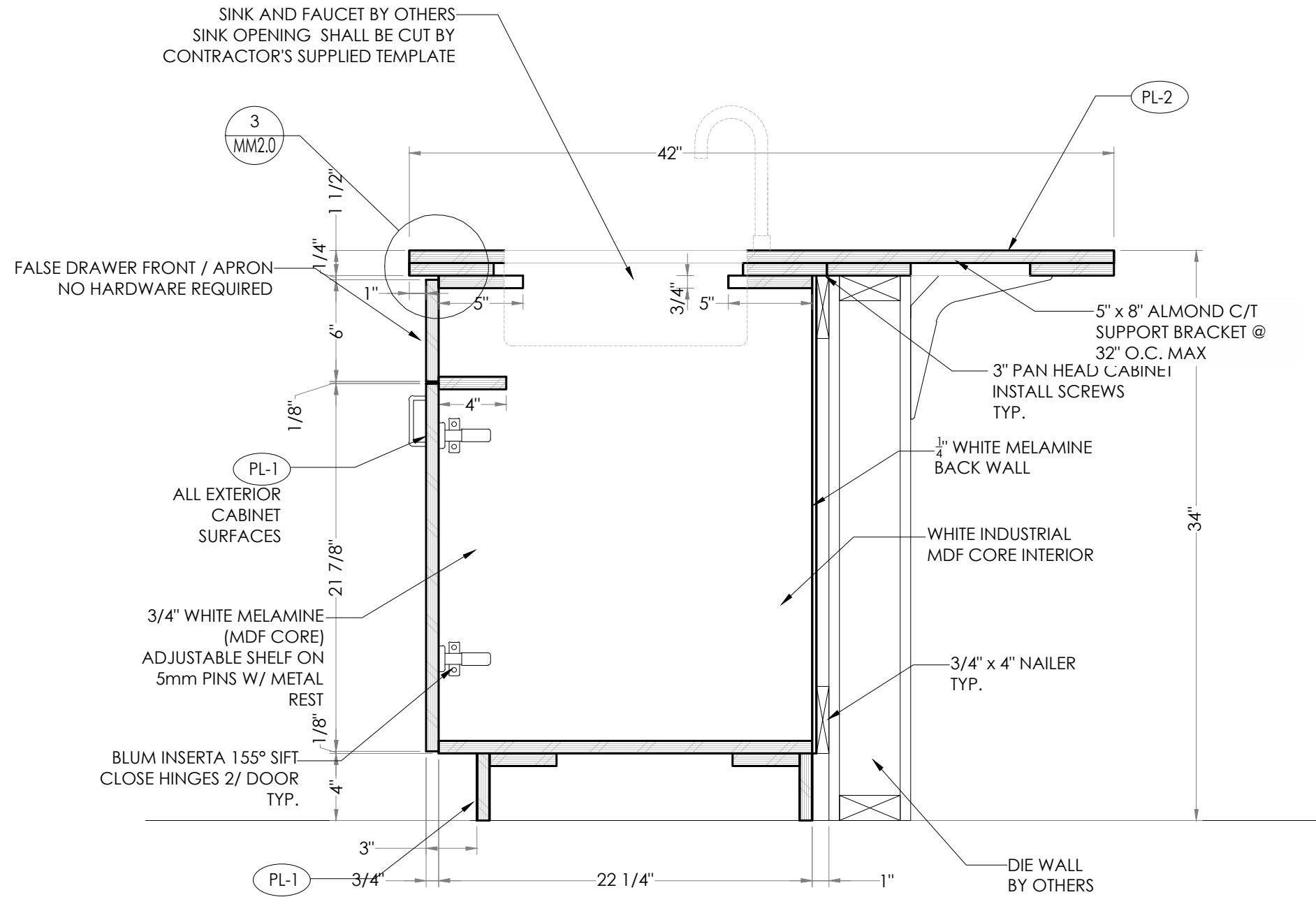
Millwork Manufacturer/Installer:

Drawn By: **GK**
SECTIONS
 ALL DIMENSIONS TO BE VIF PRIOR TO FABRICATION | ALL MATERIAL CONNECTIONS TBD IN SHOP TO BEST ACCOMMODATE SPECIFIC PIECE

Sheet Name:
MM2.3



1 SECTION
 MM2.3
 SCALE: 1 1/2"=1'-0" @ 11"x17"



1 SECTION
MM2.4
SCALE: 1 1/2"=1'-0" @ 11"x17"

Date: 10/15/2020
Rev/Date:

Project: USPFO Warehouse
Jackson, MS

USPFO Warehouse
QCP #: 20.1897 Inspection Required
McNeil Cabinet & Millwork
a QCP Accredited Firm



Millwork Manufacturer/Installer:

Sheet:

Drawn By: GK
SECTIONS
ALL DIMENSIONS TO BE VIF PRIOR TO FABRICATION | ALL MATERIAL CONNECTIONS TBD IN SHOP TO BEST ACCOMMODATE SPECIFIC PIECE

MM2.4

FINAL PAGE
INTENTIONALLY
LEFT BLANK